



Juke's Memory

For Sale
£54,950.00

This boat ticks 4 key boxes: Quality shell builder; excellent engine; cruiser stern; great layout. The layout including a good sized bedroom; separate dining and lounge areas, the former comprising the ever popular pullman dinette which converts into a double bed. All in all a cracking extensive cruiser or liveaboard.



Boat Specification:	Engine Details:	Specifications:
Vessel Type: Cruiser Stern Length x Width: 56' x 6'10" Shell built by: Price Fallows Year of construction: 2005 Fit out year: 2005 Fit out by: Halco Narrowboats Hull Thickness: Hull 10mm, hull sides 6mm, cabin sides 5mm Boat Safety Certificate Valid till: Sept 2026 Last docked for blacking: June 2019 Last Surveyed: December 2010 (copy available on request)	Manufacturer: Beta Marine Year: 2005 Power: 38hp Fuel: Diesel Last Serviced: October 2024	Batteries: 1 Starter 4 Leisure Inverter: 3000W Pure Sine Wave linked to battery management system Galvanic Isolator: No Shoreline: Yes Solar: 2x 256kw panels Hot water system: Calorifier linked to engine & Eberspacher Heating: 4 Radiators & towel rail fuelled by Eberspacher plus Multi fuel stove in saloon

Overall Accommodation:



No of berths: 6: Fixed double berth, pullman that converts to a double;

Headroom: 6' 1"

Window type and coverings: Double glazed Worcester style windows and port holes (Larger size) in chrome finish. Curtains plus roller blinds on selected windows.

Internal décor:

Ceiling and upper panels: Oak faced panels in natural finish with complimentary trim

Lower sides: Same as upper panels

Floor covering: Carpet in the main living areas; feature tiles in the galley and bathroom with scatter rugs

Lighting: LED with brass surround set into the ceiling at regular intervals complimented by feature wall lights in the saloon and dining areas plus reading lights in the bedroom. The small spotlights in the kitchen and bathroom are low wattage conventional bulbs.

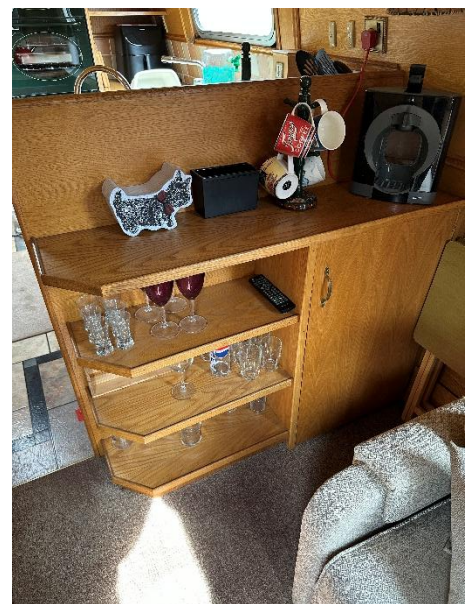


Individual Rooms (From Fore to Aft)

Living Area:

- Entry from the front deck via glazed double doors with roller blind
- Large box entry step with integral storage
- Hearth on the starboard side with charcoal tiles housing the "Villager A" Multi fuel stove
- On the opposite side, unit with shelving and storage
- Large new sofa with matching footstools, bespoke built. Footstools featuring good storage facility
- Built in display unit with cupboard and feature shelving





Galley:

- Large U shape with a range of storage options
- Natural wood units with matching melamine worktop and tiled uplifts
- High level oven and grill in pine green
- Matching hob above fridge/freezer
- Retro 12v fridge with separate freezer above finished in red
- Acrylic sink and drainer serviced by a mixer tap





Dining Area

- Pullman on raised plinth finished in burgundy upholstery with fleck finish
- Storage below sofas and plinth
- Inset feature shelving
- Wardrobe





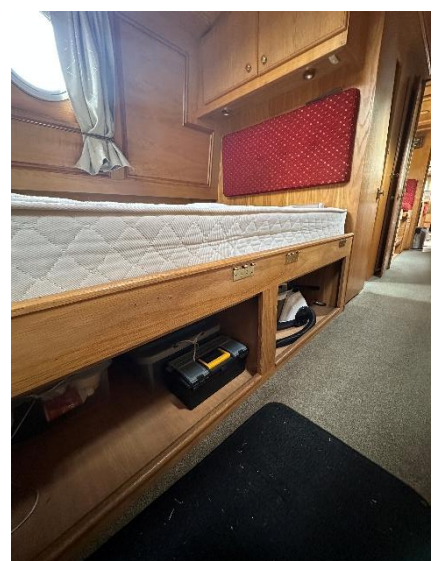
Bathroom:

- Side bathroom
- Fully enclosed shower cubicle
- Cassette toilet
- Vanity sink
- Heated towel rail
- Cupboard storage, mirror and shelf



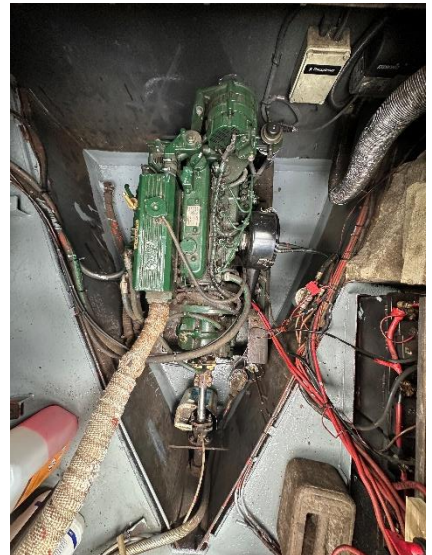
Bedroom:

- Fixed ¾ double bed with storage below
- Wardrobe to side of steps that lead onto the rear deck
- Headboard with hanging cupboard above



Engine Bay

- Located within the cruiser stern
- Good sized access hatch



External

- Spacious cruiser stern deck enclosed by rail and pram canopy, which is only 2 years old
- Small open front deck with anti-slip flooring and bench locker
- External paintwork in nice condition
- Rigid solar panels fixed to roof on proper brackets





Cruising Gear

Lock Windlass – 2
 Fenders: Fore, Aft and 3 side
 Sanitary Station Key – 1
 Anti Vandal Key – 1
 Anchor – 1

Tying Up

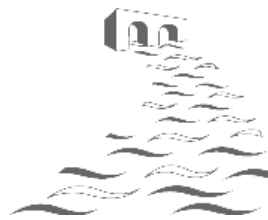
Mooring Stakes – 3
 Piling Chains/clips
 Mooring Lines: Fore, Aft and Centre

Other

- Documentation includes RCD Manual; Builder's Certificate of Conformity; Bill of Sale for current owner; Folder with equipment manuals

If you would like further information on Juke's Memory, or would like to arrange a viewing, please call Sammy Rose on 01384 295535 or 07702 190850.

Whilst every care has been taken in preparation, the correctness of these particulars are intended only as a guide and do not constitute a term of contract. Prospective buyers are strongly advised to check particulars and where appropriate, have the vessel fully surveyed/inspected.



Ashwood Canal Boat Sales,
 Ashwood Marina Ltd., Kingswinford, West Midlands, DY6 0AQ
 Tele: 01384 295535/07702 190850
 Email: info@ashwoodmarina.co.uk