



For Sale
£54,950.00

Bee's Knees

A nicely presented cruiser stern with a spacious layout that makes it feel really roomy inside. The large saloon features a bed settee and has space to add dining furniture; the galley is nicely appointed; the generous side bathroom includes a large fully enclosed shower and the bedroom has a brand-new mattress. This boat is ready to go either as an extensive cruiser or liveaboard.



Boat Specification:	Engine Details:	Specifications:
Vessel Type: Cruiser Stern Length x Width: 58' x 6'10" Built By: Dual Duel Year of Construction: 2004 Fitted Out By: Lee's Narrowboats Fit Out Year: 2005 Hull Thickness: Base 10mm, hull sides 6mm, cabin sides 5mm Boat Safety Certificate Valid Till: March 2026 Last Docked for Blacking: April 2024 Last Surveyed: August 2024 – Copy available on request	Manufacturer: Vetus M 4.17 Year: 2005 Power: 42hp Fuel: Diesel Last Serviced: January 2025 Documentation: <ul style="list-style-type: none">• RCD Manual• Builder's Certification of Conformity• Comprehensive boat folder containing manuals and documentation related to boat.	Batteries: 1 Starter 3 Leisure Inverter: Victron 3kw – new in 2025 Battery management system: Yes Galvanic Isolator: Linked to shoreline Shoreline: Yes Solar: 1x50w Hot water system: Calorifier linked to engine and webasto Heating: Radiators fuelled by webasto plus Valor Arden stove

Overall Accommodation:

No of berths: 4 (fixed double bed plus sofa bed in saloon)

Headroom: 6'4"

Window type and coverings: Windows in chrome finish with top hopper in the living area; matching portholes in the bathroom and bedroom, again with hopper opening. Roller blinds throughout.

Side Hatches: 1 in galley with solid doors

Internal décor:

Ceiling: Oak faced panels in varnished finish

Upper panels: Complimentary panels in off white finish

Lower sides: Contrasting panels in duck egg finish

Note: These colours change to mustard in the corridor and raspberry in the bathroom and bedroom

Trim: Natural wood trim in varnished finish

Floor covering: Laminate planks in wood look finish

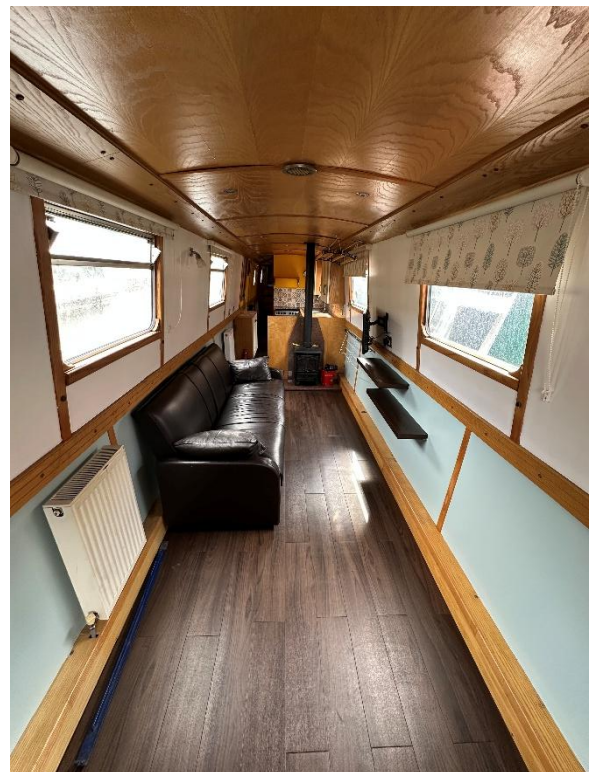
Lighting: Inset spots throughout the ceiling were replaced in 2025. These are complimented by wall lights in the saloon and reading lights in the bedroom

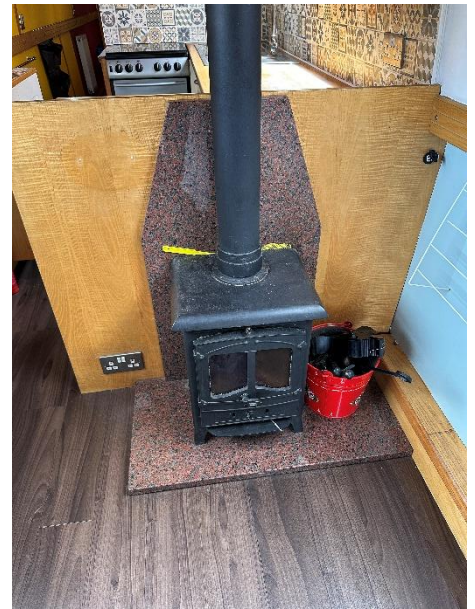


Individual Rooms (From Fore to Aft)

Living Area:

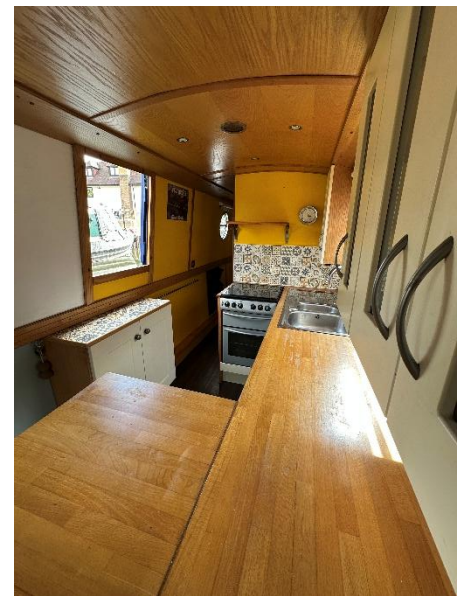
- Entry from the front deck with glazed windows set both within the doors and bulkhead either side
- Matching units either side of the large, wide entry step that includes integral storage
- Shelving on the portside
- Space opposite to add small dining table or additional seating
- Large leather look sofa that converts to a double bed
- TV with inbuilt DVD and further shelving
- Valor Arden stove set on feature hearth, located centrally between the saloon and galley for better heat dispersal





Galley:

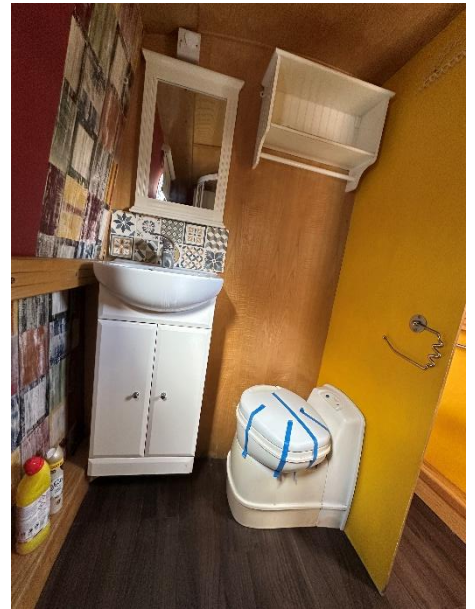
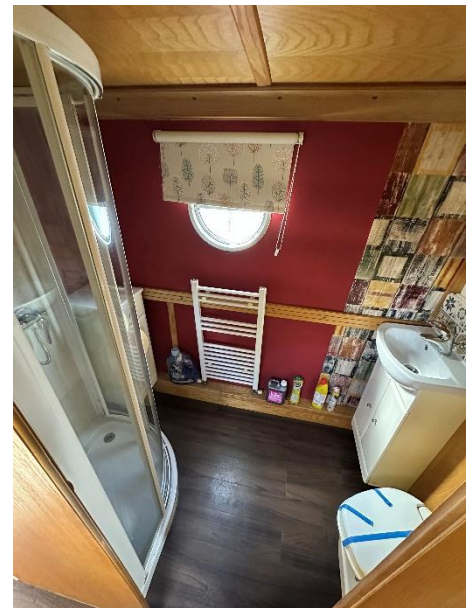
- Large U shape with upper and lower units offering a variety of storage solutions
- Cream units, upper cupboards having inset glazed doors
- Melamine worktops in wood look finish
- Feature tiled upstands, with offset unit featuring same finish on the worktop
- LPG cooker with 4 burner hob and separate grill and oven below
- 12v Danfoss fridge with freezer
- Stainless sink and drainer serviced by a mixer tap





Bathroom:

- Spacious side bathroom
- Fully enclosed shower
- Cassette toilet with spare cassettes
- Feature vanity sink with storage below and matching unit next to the shower
- Cabinet with mirror on door
- Heated towel rail
- Open shelf with hanging storage below

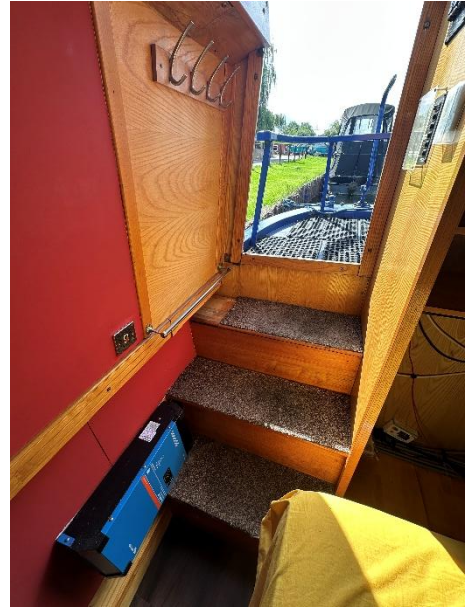




Bedroom:

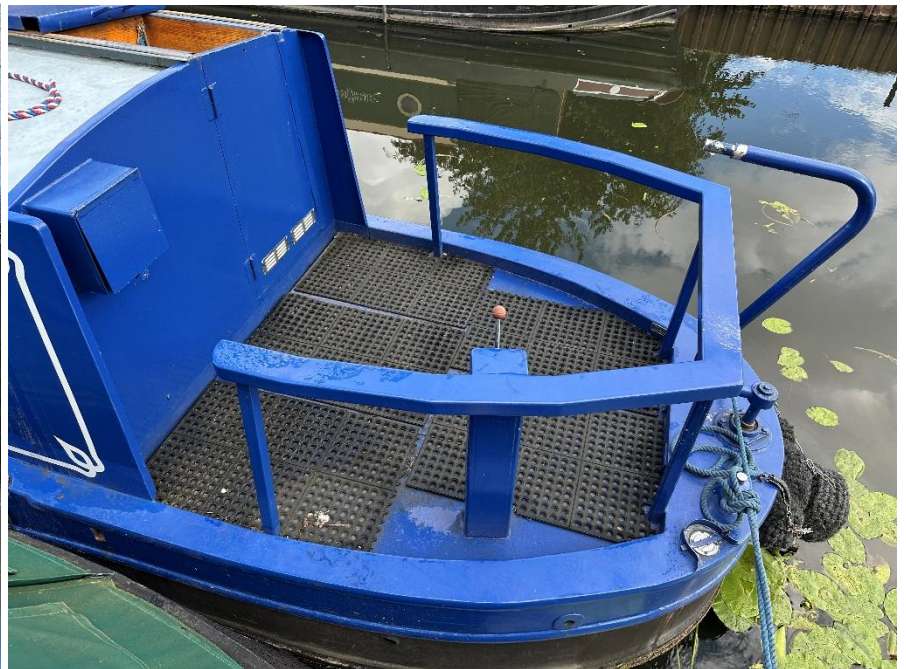
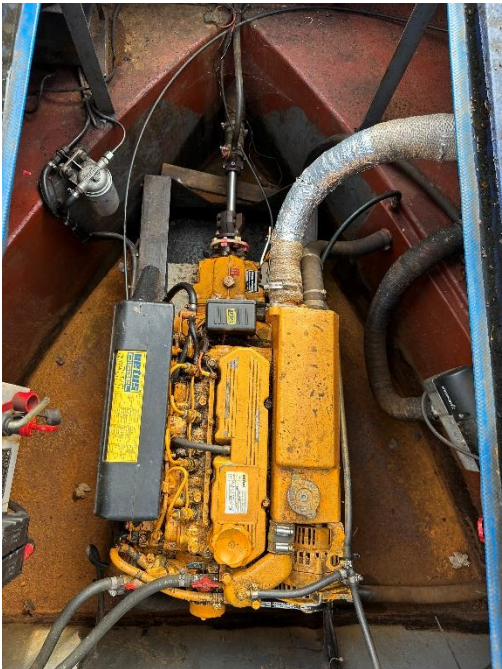
- Fixed double bed with brand new, unused mattress
- Storage below the bed
- Headboard with hanging cupboard above and inset reading lights on the underside
- Open storage at the base with shelving and hanging space
- Large steps leading onto stern deck that have the inverter alongside





Engine Bay

- Located beneath the rear stern deck
- Clean presentation



External

- Large cruiser stern deck with guard rail
- Open front deck
- Paintwork in very nice condition
- Solar panel on roof



Cruising Gear

2 Lock windlass
Fenders 1 fore, 1 aft and 5 side
Sanitary station key – Yes
Anti vandal key - Yes

Tying Up

2 Mooring stakes
1 piling chain
Mooring line: 1 fore, 1 aft and 1 centre

Other

- Within the 2024 hull survey the following recommendations were made; updates are given in blue below:

Ref	Recommendations	*	page
A.	Recommend the replenishment of the blacking within the next 12-18 months *	*	5
B.	Recommend the bottom rudder cup be re-made **	**	6
C.	Recommend the engine be serviced and the alternator belt changed /adjusted **	***	10
D.	Recommend the engine mounts be investigated (see above note) ***	***	10
E.	Recommend the bolts at the R&D coupling be investigated ***	***	10
F.	Recommend the batteries are prevented from moving in any direction ***	***	10
G.	Recommend the bilge pump be hard-wired to the batteries ***	***	11
H.	Recommend the inverter be investigated ***	***	11
I.	Recommend firefighting equipment be installed to boat safety standards ***	***	13

A – Blacking is due circa Spring 2026

B – This was further inspected when the boat was transported to the current owner's mooring and the owner was subsequently advised that this was unnecessary.

C – Completed by RCR and paperwork for this is in the boat's folder.

D – Engine mounts have been replaced

E – RCR reviewed this when they serviced the engine and found there to be no issue

F – Batteries have been upgraded from 2 to 3 and a new tray to house these has been fitted

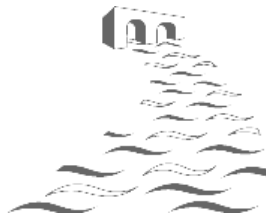
G – To be confirmed

H – Inverter replaced by a Victron 3kw

I – This has not been done

If you would like further information on Bee's Knees, or would like to arrange a viewing, please call Sammy Rose on 01384 295535 or 07702 190850.

Whilst every care has been taken in preparation, the correctness of these particulars are intended only as a guide and do not constitute a term of contract. Prospective buyers are strongly advised to check particulars and where appropriate, have the vessel fully surveyed/inspected.



**Ashwood Canal Boat Sales,
Ashwood Marina Ltd., Kingswinford, West Midlands, DY6 0AQ
Tele: 01384 295535/07702 190850
Email: info@ashwoodmarina.co.uk**