



## Balinga Two

**For Sale**  
**£54,950.00**

**A beautiful, ready to go anywhere, traditional narrowboat built and fitted out to a high standard with a quality interior finish and an attractive layout. Ideal for extensive cruising or live aboard as includes large saloon with dining facility and space to add small recliner or tub style chairs; well appointed galley, bathroom and master bedroom with wardrobes and cross bed.**



<p><b>Boat Specification:</b></p> <p><b>Vessel Type:</b> Traditional narrowboat  <b>Length x Width:</b> 60' x 6'10"  <b>Built by:</b> Alexander Boat Builders  <b>Year of Construction:</b> 2007  <b>Fitted Out By:</b> Roger Fincher  <b>Hull Thickness:</b> Base 10mm, hull sides 6mm, cabin roof 4mm  <b>Boat Safety Certificate Valid till:</b> April 2027  <b>Last docked for blacking:</b> September 2024  <b>Last Surveyed:</b> 2018 – Copy available on request  <b>CRT Index No:</b> 515908  <b>HIN No:</b> 00974K507</p>	<p><b>Engine Details:</b></p> <p><b>Manufacturer:</b> Isuzu  <b>Year:</b> 2007  <b>Power:</b> 42hp  <b>Fuel:</b> Diesel  <b>Last Serviced:</b> September 2024</p>	<p><b>Specifications:</b></p> <p><b>Batteries:</b> 1 starter, 4 leisure (AGM)  <b>Inverter:</b> Victron 2kw  <b>Battery management system:</b> Yes  <b>Galvanic Isolator:</b> Yes  <b>Shoreline:</b> Yes  <b>Solar:</b> 2x Victron panels; Total 610w  <b>Hot water system:</b> Calorifier linked to engine  <b>Heating:</b> Radiators fuelled by eberspacher, Coalbrookdale stove in saloon</p>
--	---	--

**Overall Accommodation:**

**No of berths:** 4

**Headroom:** 6'3"

**Window type and coverings:** Anodised windows with top hopper win the main living areas and bathroom; portholes for extra privacy in the bedroom. Curtains throughout to match upholstery hung on brass looking poles.

**Side hatch:** Located between the galley and corridor opposite the side bathroom, has feature canal artwork on the door panels

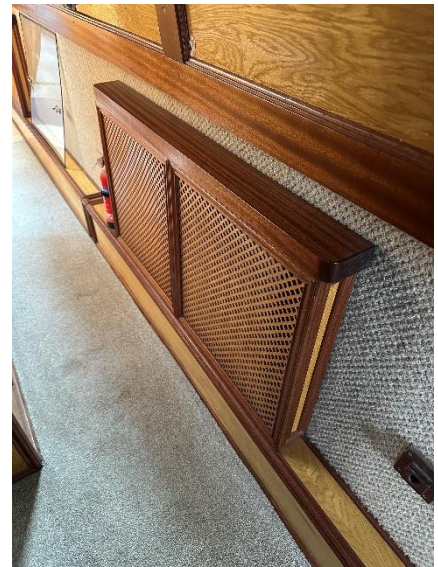
**Internal décor:**

**Ceiling and upper panels:** Varnished oak panels with contrasting natural wood trim

**Lower sides:** Textile in oatmeal finish

**Floor covering:** Carpet in the main living areas; linoleum in the galley and bathroom

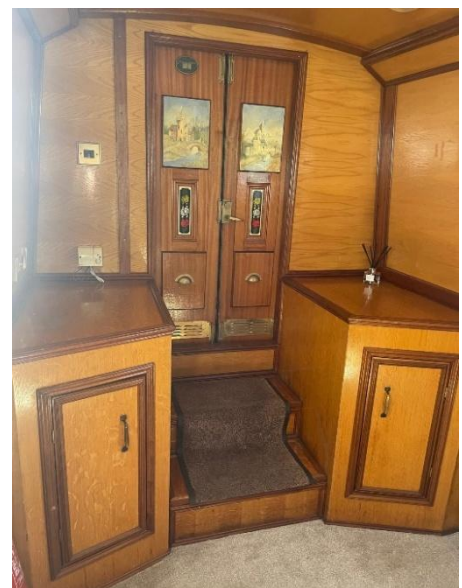
**Lighting:** Feature ceiling spots with LED bulbs plus feature hanging lamp in the galley and wall reading lights in the bedroom



## Individual Rooms (From Fore to Aft)

### Living Area:

- Entry off the front deck through double doors with traditional canal artwork
- Units to match interior décor on either side of the entry steps
- Large open area to add free standing furniture, such as a small sofa
- Central multi fuel stove set on feature tiled hearth, to disperse heat forward and aft



## Dining:

- Bench sofas flank each gunwale upholstered in sage green velour to match curtains and galley finish
- Although the current owner has carpeted the dining area there is still the drop in table option which creates either a large dining area for 4-6 diners, or cosy table for 2 diners
- Sofas convert into a double bed
- Storage below each sofa
- Linking with the saloon, this creates plenty of space for family and friends to socialise



## Galley:

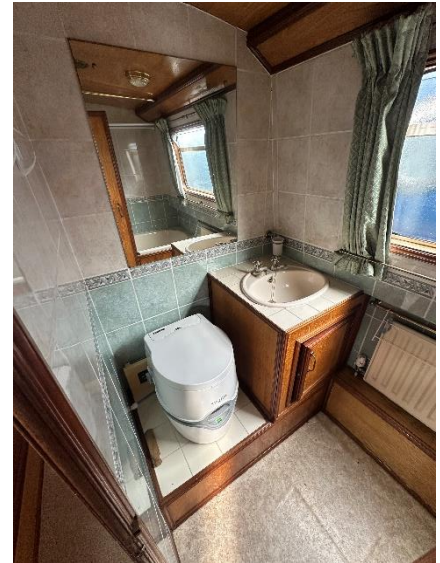
- Solid oak units that match the ones flanking the entry steps offer a range of storage solutions
- Melamine worktops in mottled green to match soft furnishing in the dining area
- Tiled uplifts in a mix of terracotta, stone and avocado to complement the natural wood and green interior decor
- Integrated sink and drainer in pine
- 4 burner LPG hob finished in the same pine green to match
- Matching separate grill and oven below
- Washing machine concealed behind one of the unit doors
- Worktop 240v fridge





### Bathroom:

- Side bathroom off corridor that links main living area to the bedroom
- Tiled throughout for easy cleaning and aesthetically pleasing look
- Built in vanity and toilet area, the latter originally housing a pump out but currently replaced with a free standing portable toilet
- Hip bath with overhead shower and feature taps



### Bedroom:

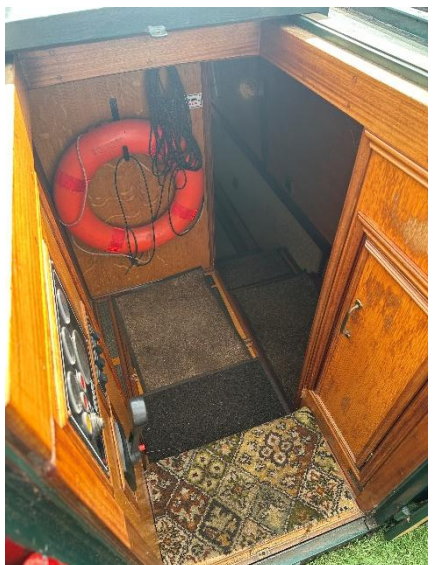
- Featuring 2 fitted large wardrobes and side cabinets to again match the interior panelling
- Cross bed to give full 4'6" width, storage below





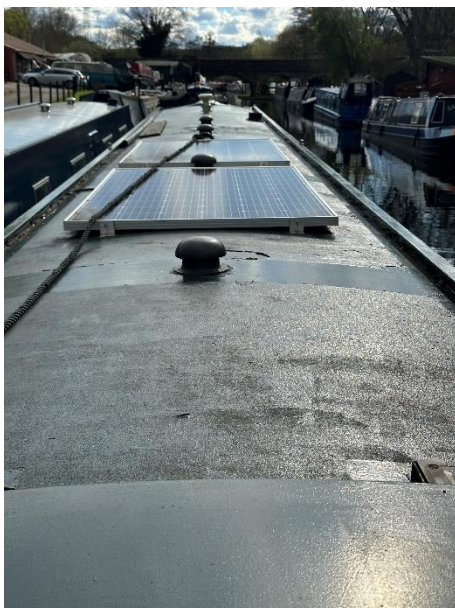
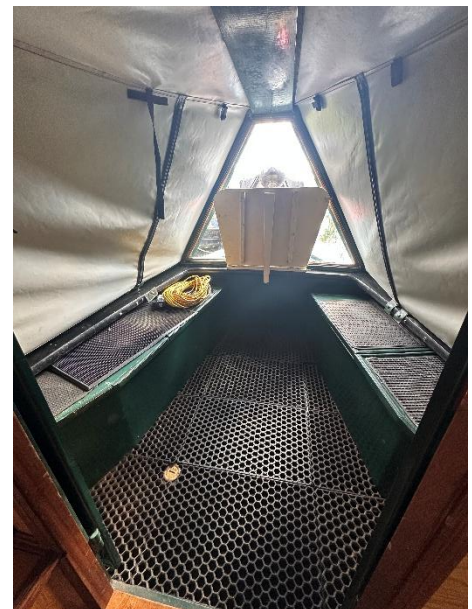
### Engine Room

- Panelled out in the same finish as the main cabin
- Engine boxed in to provide storage, ideal for wet weather gear and footwear
- Boxing lifts to access the engine for servicing and maintenance



## External

- Front cratch area has cover and board, providing an additional area for storage or sitting out on a pleasant day
- Rails with lean facility on rear stern counter
- External paintwork in traditional finish is in nice condition but would benefit from touching up, especially on the roof



### **Cruising Gear**

2 Lock windlass  
Fenders – 4 can be moved to suit  
Anti vandal key – Yes  
Boat pole  
Boat hook

### **Tying Up**

2 Mooring stakes  
2 piling chains  
Mooring line: 1 fore, 1 aft and 1 centre  
Boat Plank

### **Other**

#### **Documentation:**

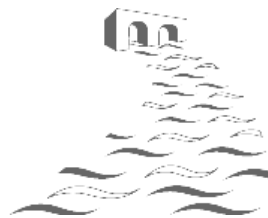
- Bill of sale for current owner and previous owner
- Builders' Certificate of Conformity
- No RCD manual as although Roger Fincher fitted out a number of boats to a beautiful standard, he never formally registered as a boat builder and so technically this is classed as a self-fit out

#### **Other Information:**

Boat folder with equipment manuals and invoices

If you would like further information on Balinga Two, or would like to arrange a viewing, please call Sammy Rose on 01384 295535 or 07702 190850.

Whilst every care has been taken in preparation, the correctness of these particulars are intended only as a guide and do not constitute a term of contract. Prospective buyers are strongly advised to check particulars and where appropriate, have the vessel fully surveyed/inspected.



**Ashwood Canal Boat Sales,  
Ashwood Marina Ltd., Kingswinford, West Midlands, DY6 0AQ  
Tele: 01384 295535/07702 190850  
Email: [info@ashwoodmarina.co.uk](mailto:info@ashwoodmarina.co.uk)**