



## Happy Days

**For Sale**  
**£34,900.00**

Boats built by John White are popular as they are seen as solidly built and easy on the eye. This one has an attractive layout with a large saloon, cottage style galley, bedroom with wardrobe space, side bathroom with shower and engine room. The engine is boxed in, so that this area offers useful storage. The front deck area is larger than the average, making it a perfect al fresco dining area on pleasant days. As to be expected for a boat of this age, whilst the boat is good to go, some areas need attention.



<p><b>Boat Specification:</b></p> <p><b>Vessel Type:</b> Traditional Narrowboat  <b>Length x Width:</b> 55' x 6'10  <b>Built by:</b> John White  <b>Year of Construction:</b> 1993  <b>Fitted Out By:</b> Paul Mills  <b>Year of Commission:</b> 1994  <b>Hull Thickness:</b> Base 10mm, hull sides 6mm, cabin sides/roof 4mm  <b>Boat Safety Certificate Valid till:</b> Expired March 2026. Seller happy to negotiate renewal as part of the sale. Details of the failures and the cost to put them right available on request.  <b>Last docked for blacking:</b> September 2020  <b>Last Surveyed:</b> August 2020 – copy available on request, together with evidence of recommended works being carried out</p>	<p><b>Engine Details:</b></p> <p><b>Manufacturer:</b> Beta (Kobota)  <b>Year:</b> 1993  <b>Power:</b> 35hp  <b>Fuel:</b> Diesel  <b>Last Serviced:</b> June 2025</p>	<p><b>Specifications:</b></p> <p><b>Batteries:</b> 1 Starter 3 Leisure  <b>Inverter:</b> 1500w  <b>Battery management system:</b> Yes  <b>Galvanic Isolator:</b> Yes  <b>Shoreline:</b> Yes  <b>Solar:</b> 2 x 100w panels  <b>Hot water system:</b> Calorifier linked to engine plus emersion heater in calorifier for when shoreline available  <b>Heating:</b> Radiators linked Alde boiler plus Morso Squirrel Stove in saloon  <b>Headroom:</b> 6'  <b>Berths:</b> 4 (fixed double bed plus sofa bed in saloon)</p>
--	--	--

## Overall Accommodation:



**No of berths:** 4 Fixed double bed plus sofa bed in saloon

**Headroom:** 6'

**Window type and coverings:** Aluminium windows with top hopper; curtains in the main living area and bedroom on feature poles; rollers blind in the galley and bathroom

### Internal décor:

**Ceiling and upper sides:** Varnished panels with complementary trim; except for the bathroom where panels are painted.

**Lower sides:** Ash grey textile

**Floor covering:** Laminate planks in natural wood look finish

**Lighting:** Tungsten style lights set into the ceiling at regular intervals, plus reading spots in the bedroom



## Individual Rooms (From Fore to Aft)

### Living Area:

- Large sofa in dark ash which converts to a double bed
- Easy chair in vanilla
- Morso Squirrel stove set on hearth with quarry tile finish
- Corner unit with hanging cupboard above and TV

The free standing furniture gives the option of changing the layout to add dining furniture or installing fitted furniture.

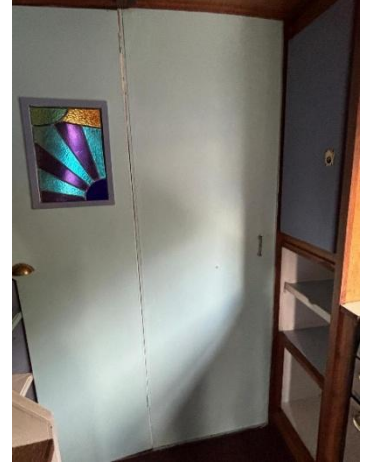




**Galley:**

- Retro "Ladylove" style units finished in powder blue with ticket drawer handles that offer a mixture of cupboard and drawer storage
- Mix of melamine and varnished worktops
- Large stainless sink and drainer with mixer tap
- Pantry type cupboard
- Worktop height 12v fridge with ice box
- Free standing LPG cooker with separate grill and oven





### Bedroom:

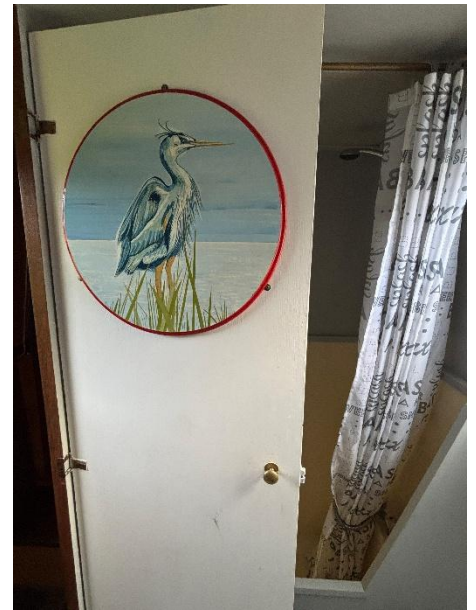
- Fixed cabin bed with storage below
- Hanging cupboard above the bed head with reading lights below
- Wardrobe and drawer storage





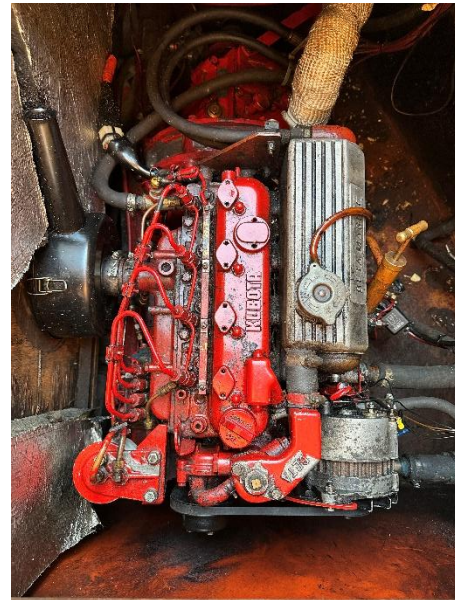
## Bathroom

- Side bathroom with feature entry door
- Free standing portable toilet
- Vanity unit with bowl wash basin and tower tap
- Hip bath with overhead shower
- Alde gas boiler



## Engine Room

- Engine boxed in thereby giving great space for additional storage
- Cupboard storage plus access to inverter and other equipment
- Helmsman's seat for rear counter
- Traditional artwork on doors



## External

- Generous front deck area with bench seating and locker storage
- Canopy and glazed cratch board
- Paintwork in serviceable condition, needs touching up in places
- Cover for rear doors and sliding hatch





### **Cruising Gear**

- 2 Lock windlass
- Fenders - fore, aft and side
- Sanitary station key – Yes
- Anti vandal key – Yes
- 2 Boat poles

### **Tying Up**

- 2 Mooring stakes
- 2 piling chain
- Mooring line: 1 fore, 1 aft and 1 centre

### **Other**

#### **Documentation:**

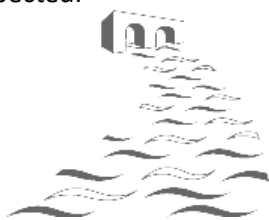
- RCD Manual – None as boat built pre the introduction of the RCD
- Builder's Certificate of Conformity – No paperwork but builder's plate on front deck

#### **Other Information:**

- It is usual for boats of this age to have their outlets close to the waterline; it is possible a surveyor may recommend remedial action to raise these.
- Electrical installations with older boats were satisfactory at the time of fitting but are often outdated and sometimes surveyors recommend upgrading to meet current requirements
- The boat safety examination in March 2026 details a number of failures. We have a listing of these, together with a costing for remedying. The seller is happy to receive sensible offers that take this into account.

If you would like further information on Happy Days, or would like to arrange a viewing, please call Sammy Rose on 01384 295535 or 07702 190850.

Whilst every care has been taken in preparation, the correctness of these particulars are intended only as a guide and do not constitute a term of contract. Prospective buyers are strongly advised to check particulars and where appropriate, have the vessel fully surveyed/inspected.



Ashwood Canal Boat Sales,  
Ashwood Marina Ltd., Kingswinford, West Midlands, DY6 0AQ  
Tele: 01384 295535/07702 190850  
Email: [info@ashwoodmarina.co.uk](mailto:info@ashwoodmarina.co.uk)